



## 2011 Fall Bulb Sale Information

Welcome to the Hancock County Soil and Water Conservation District's Annual Fall Bulb Sale! We thank you for your continued support.

**Completed order forms and payment must be received at the District office by Wednesday, August 3rd.**

Pickup day for all orders is Friday, October 21st at the District office located at 190 Bangor Road in Ellsworth.

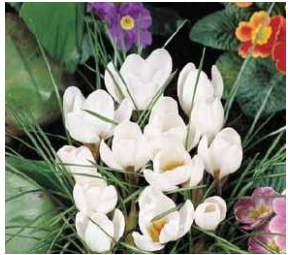
We are not a nursery, all orders are subject to the quantity of items that we can purchase from our vendors and are filled on a first come first served basis.

The Conservation District is not responsible for the condition of any orders that are not picked up on the scheduled pickup date.

The Hancock County Soil and Water Conservation District is a nonprofit organization. Funds from this sale will be used to promote conservation and wise use of soil, water and other natural resources. We thank you for your support!

**Bloom Codes:**

- VE = very early spring
- ES = early spring
- MS = mid-spring
- LS = late spring
- SU = summer



Ard Schenk Crocus



Barr's Purple Crocus



Jumbo Crocus Mix



Carnegie Hyacinth



Hyacinth Mix

### Crocus

**3552- 'Ard Schenk'** - (VE, 3"-4" tall)- Pure white with a golden-yellow center and brilliant orange pistils, very lightly feathered grey-blue on the outside. Lightly fragrant. **20/\$4.50**

**3662- 'Barr's Purple'** - Species Crocus- (VE, 3"-4" tall)- Soft amethyst-violet flowers are silvery outside. Spreads easily. **20/\$5.50**

**3732- Jumbo Crocus Mix-** (VE-ES, 4"-6" tall)- A tempting mix of colors to help you welcome spring. Excellent for naturalizing and border plantings. **40/\$10.75**

### Hyacinths

**4832- 'Carnegie' Hyacinth-** (ES, 8"-12" tall)- Dense spike of milky white florets. The classic white hyacinth. **6/\$7.50**

**4902- Hyacinth Mix-** (ES, 8"-12" tall)- Landscape size bulbs in a beautiful mix of colors. **12/\$10.50**

### Iris (pictures of these are on the next page)

Dutch Irises are elegant early summer favorites, versatile in the garden, and long lasting cut flowers. The bright flowers contrast the slender, grass-like foliage perfectly.

**5082- 'Blue Ribbon'**- (SU, 16"-24" tall)- Rich velvety purplish-blue with a deep golden yellow crest. One of the best cut flowers. **20/\$5.75**

**5121 - Dutch Iris Mix-** A wonderful mix of colors. Iris are regarded as one of the best cut flowers. **20/\$7.25**

Reblooming Bearded Iris enjoy the first bloom in spring and a second show from August to October. Some have a sweet fragrance. They are easy to grow but cannot tolerate wet feet so be sure the soil is well drained. Average height 30-38".

**1161-'Best Bet'** - Purplish-blue falls, lightly dusted white around the blue purple beard, standards shimmering white. **1/\$4.75**

**1171-'Beverly Stills'** - Pale coral pink with apricot beards, ruffled and flaring. **1/\$4.75**

**1181-'Immortality'** - Pure white standards and falls with a pale yellow blush. **1/\$4.75**

## Daffodils

**6032—Dutch Master**—(ES-MS, 18"-20" tall)— Large yellow petals with a scalloped yellow trumpet. Prolific with multiple flowers per bulb. **20/\$8.00**

**6142- 'Ice Follies'**- (ES-MS, 16"-18" tall)- Large white ruffled cup opens bright yellow, then fades to creamy white. A very popular narcissus, grown worldwide. **20/\$9.75**

**6202- 'Delnashaugh'**- (MS-LS, 14"-18" tall)- 4" ivory-white outer petals almost hidden by a profusion of ruffled rich apricot-pink and white centers. Long-lasting flower. Prefers partial shade. **10/\$8.00**

**6222- 'Sir Winston Churchill'** - (MS, 14"-16" tall)- Blooms 3" across are full of creamy white petals interspersed with orange flecks. 3-5 highly fragrant blossoms per stem. **10/\$7.50**

**6342- 'Geranium' Tazetta Narcissus-** (MS-LS, 12"-14" tall)- Bright white petals with small vivid orange-red cups. Heavy clusters of up to 6 outward-facing fragrant flowers. Prolific with a sweet fragrance. **10/\$5.50**

**6392- 'Tete-a-Tete' Narcissus-** (ES-MS, 6"-8" tall)- Butter-yellow petals w/ deeper orange cups, easy to grow. Good for forcing and naturalizing. Makes an excellent cut flower. **10/\$5.50**

**6402 - Fragrant Narcissus Mix-** (ES-LS, 14"-18" tall)- A mix of sweetly scented narcissus, great for bouquets. **20/\$11.50**

**6422- Landscape Narcissus Mix-** (ES-LS, 12"-18" tall)- If you're looking for a large splash of springtime inspiration that will last year after year, dig into our landscape mix. **20/\$8.50**

## Specialty Bulbs

**7072- Allium sphaerocephalon Drumsticks-** (SU, 20"-30" tall) - Dense 1"-2" dark reddish maroon balls. Very long lasting blooms. Wonderful with daylilies. **20/\$4.50**

**7122- Anemone blanda 'Blue Shades'**- (ES, 3"-6" tall)- Small, enchanting daisy-like flower in a rich mix of shades of blue and violet. Does well in light shade. **20/\$5.00**

**7152- Glory of the Snow- Chionodoxa forbesii-** (ES, 4"-8" tall)- Soft blue petals, with white centers. Does well in shade, woodland gardens, and full sun. **20/ \$4.25**

**7221- Fritillaria 'Lutea'**- (MS, 26"-30" tall)- Clear lemon yellow bell-like flowers with light purple veining. **1/\$7.75**

**7302- Grape Hyacinths-** (MS, 6"-8" tall)— Spikes of bright cobalt blue with subtle white rims, good for forcing, cutting, naturalizing, and borders. Fragrant. **20/\$4.50**

**7382- Striped Squill-** (ES, 4"-6" tall) - Compact pale blue flowers, striped with darker blue. 4-10 open bells per stem. Plant in full sun or light shade as drifts, in borders, or under trees. Very hardy and easy to naturalize. Quickly forms colonies. **20/\$4.50**

**8042- Tulipa humilis 'Persian Pearl'**- (ES-MS, 4"-8" tall)- Dusky magenta outside, lightly veined green. Inside deep violet-magenta with a bright yellow base. Opens wide in sun offering cheery color and sweet scent. **10/\$4.50**

**8082- Tulipa tarda Syn. T. dasystemon-** (MS, 4"-5" tall)- Star-shaped yellow flowers with white tips, outside white flushed with purple. Very multi-floral, 4-6 flowers per bulb. **10/\$3.50**

**5052- Iris reticulata 'Joyce'**- (ES, 4"-6" tall)- Sky blue with a golden yellow crest. Robust and hardy, spreads easily **20/\$5.50**

Bloom Codes:  
VE = very early spring  
ES = early spring  
MS = mid-spring  
LS = late spring  
SU = summer



Blue Ribbon



Dutch Iris Mix



Best Bet Iris



Beverly Stills Iris



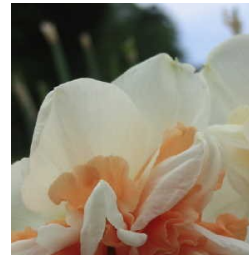
Batik Iris



Dutch Master



Ice Follies



Delnashaugh



Sir Winston Churchill



Geranium Tazetta



Tete-a-Tete



Fragrant Narcissus Mix



Landscape Mix



Allium Drumsticks



Anemone blanda



Glory of the Snow



Fritillaria 'Lutea



Grape Hyacinth



Striped Squill



Persian Pearl



Dasystemon



Joyce Iris



Lollypop Lily



Oriental Lily Mix



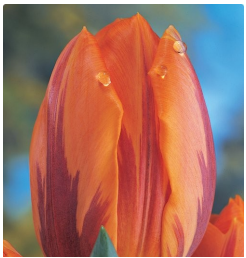
Non-Stop Reds Mix



Purple Prince



Double Early Mix



Red Emperor



Pastel Triumph Mix



Pink Impression



Mrs. John T. Scheepers



White Triumphator



Rococo



Bowl of Beauty



Sarah Bernhardt



Goldilocks Crocus

## Lilies

**5252 - 'Lollypop' Asiatic Lily**– (SU, 30"-32" tall)– Starry hot pink petals with a creamy white throat dusted with tiny reddish-brown spots. Floriferous. **3/\$10.75**

**5273- Oriental Lily Mix**- (SU)- The five or more varieties in this mix of 34"-38" Oriental hybrids will draw a crowd to your garden in August. Delight your guests with all-pinks, all-whites, bicolors with lighter borders, even some with spots! **12/\$36.00**

## Tulips

Hybrid tulips are brilliantly colored and particularly long lasting, their short, sturdy stems make them ideal for growing in windy exposed locations.

**9032- Non-Stop Reds Tulip Mix**- (ES-LS, 12"-24" tall)- Celebrate spring with a long-lasting patch of bright red color. Blend of five or more varieties selected from early, mid and late tulips. **20/\$11.75**

**9072- 'Purple Prince'**- (ES, 12"-14" tall)- Deep bluish-purple with dusky lilac flames, reddish-purple inside. Large flowers with a scalloped edge. **10/\$5.25**

**9102- Double Early Tulip Mix**- (MS, 10"-12" tall)- A wonderful group of five or more early doubles for the front row of your garden beds and borders. **20/\$13.75**

**9122- 'Red Emperor'**- (ES, 12"-16" tall)- Huge blooms of fiery red on a black and yellow base. **10/\$6.25**

**9212- Pastel Triumph Tulip Mix**- (MS, 18"-20" tall)- Soft but not wishy-washy, easy on the eyes with no sharp edges, just quiet beauty. This calming blend's display will promote tranquility in the neighborhood. **20/\$8.75**

**9322- 'Pink Impression'**- (MS, 30"-36" tall)- Deep rose exterior with deeper veins and pink flames, delicate pink edges; inside light pink and pale rose. Taller and larger than most and quite gorgeous. **10/\$6.50**

**9382- 'Mrs John T Scheepers'**- (LS, 12"-18" tall)- Many consider this the best yellow tulip ever produced. Rich luminous color with perfect form. **10/\$6.00**

**9462- 'White Triumphator'**- (MS-LS, 18"-24" tall)- Opens creamy, then becomes a true white. Registered in 1942, still considered one of the very best forms. Long-lasting bloom. **10/\$6.50**

**9512- 'Rococo'**- (LS, 12"-14" tall)- Carmine red with ruffled petal borders, central ribs warmly splashed in shades of green and plum. From 'Coeur Cardinal,' and quite delicious. **10/\$6.75**

## Peonies

**1241 - Bowl of Beauty** - Upright lemony cream, ribbon like petals fill the large bowl shaped bright pink flower. **1/\$8.25**

**1261- Sarah Bernhardt- (LS-early SU)** – Fragrant flowers open light rose-pink. Matures to a more delicate pink with a slight creamy-silvery edge. Fully double flowers, 6-8" across. **1/\$8.25**

## Collections

**3521- The Storyland Garden Collection**- (VE-MS, 3"-18" tall)- Looking for an autumn garden project with the kids that's not just child's play? Try our "kinder-garden" collection of 7 characters from storyland. Early spring heralds the arrival of crocuses 'Goldilocks' and 'Peter Pan', followed by narcissus 'Rip van Winkle', and tulips 'Mickey Mouse', 'Pinocchio', and 'Red Riding Hood'. With tulip 'Oscar', that shy old grouch, waiting until the end to show his face, your family will have weeks of beautiful blooms in white, gold, yellow, red and orange to stimulate everyone's imagination. 45 bulbs, 7 varieties. 1 collection/\$24.25

